



Hernando County EMERGENCY OPERATIONS CENTER Alert Form

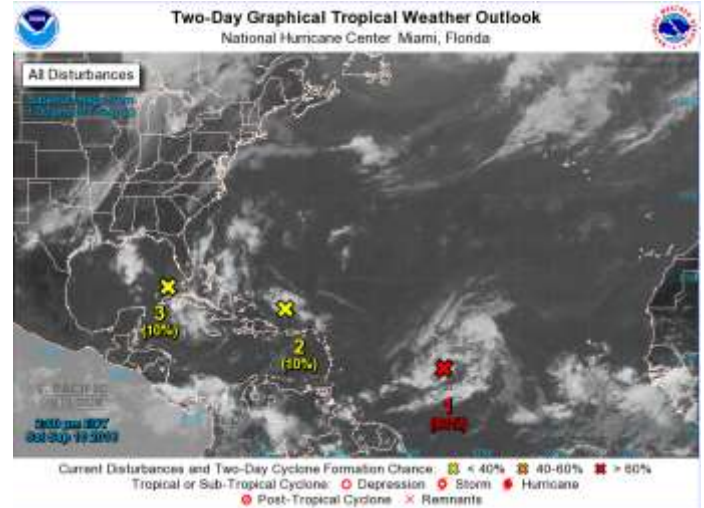


EVENT	Hurricane Hermine
DATE	10 September 2016
TIME	2:00 PM
REPORT #	14

	EOC LEVEL OF ACTIVATION
	1/ FULL
	2/ PARTIAL
X	3/ MONITORING

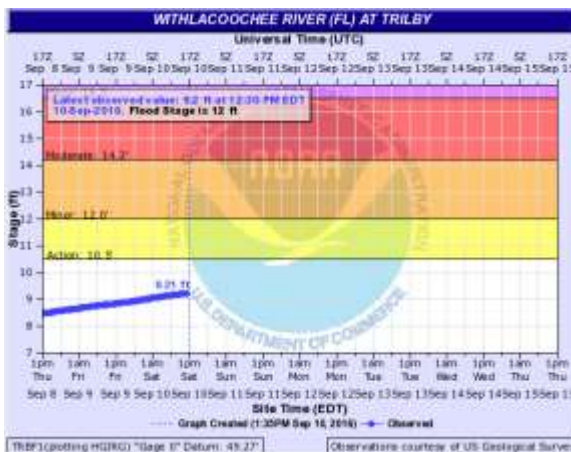
Weather Update

The Emergency Operations Center continues to monitor activity in the tropics. At this time, there is a system near the Florida Keys which is expected to track toward the Central Gulf. Another system, near Puerto Rico, is expected to bring rain and gusty winds to Florida's East Coast early next week. A third system, in the central Atlantic, is not likely to be a threat to Florida. Residents are urged to actively monitor for changes in development and forecast track.



River Update

River gages indicate that the Withlacoochee River **continues** to slowly rise. The Withlacoochee River at Trilby is currently at 9.21 feet; action stage is 10.5 feet. The Withlacoochee River at Croom is currently at 6.44 feet; action stage is 8 feet. Residents living near the river are advised to continue to monitor river levels and review emergency plans at this time. River gauge data is available at <http://water.weather.gov/ahps2/index.php?wfo=tbw>



PUBLIC INFORMATION CENTER (PIC) : (352) 754-4083 or (352) 754-4111 (Recorded)

Hernando County Sheriff Office - Emergency Management	National Weather Service - Brooksville
Florida Division of Emergency Management	FEMA
MyFlorida.com	American Red Cross



Hernando County
EMERGENCY OPERATIONS CENTER
Alert Form



State/FEMA Public Damage Assessment

The FEMA and State preliminary damage assessment was completed on Friday, September 9th. The assessment results are pending and when available will be published at:
<http://www.floridadisaster.org/info/>

Debris Collection

Debris collection is continuing through the weekend in the **coastal areas** of Hernando County. Residents are **reminded** of the following guidelines:

- Residents are asked to place any storm-generated debris on the public right-of-way. Per our debris contractor, please set out debris for the first pass no later than **Monday, Sept. 12, 2016**.
- The public right-of-way is the area of residential property that extends from the street to the sidewalk, ditch, utility pole, or easement. Do not place debris on the roadway. Keep vegetative debris (woody burnable debris such as limbs and shrubbery) separated from construction and demolition debris and white goods (refrigerators, washers, dryers) as they will be collected separately. Bagged debris should not be placed on the public right-of-way; only loose debris will be collected.
- Do not place near water meter, fire hydrant or any other aboveground utility. Only debris placed on the public right-of-way will be eligible for collection until further notice.

If all debris is not picked up during the initial pass, please continue to push remaining debris to the right-of-way for collection on subsequent passes. Household garbage will be collected by your normal service provider on usual collection dates.

Contact the Emergency Operations Center with questions during normal business hours of 8 a.m. to 5 p.m.

Approved By: Cecilia Patella

PUBLIC INFORMATION CENTER (PIC) : (352) 754-4083 or (352) 754-4111 (Recorded)

Hernando County Sheriff Office - Emergency Management	National Weather Service - Brooksville
Florida Division of Emergency Management	FEMA
MyFlorida.com	American Red Cross