

Hernando County Sheriff's Office Emergency Management

Deepwater Horizon Oil Spill



Cecilia Patella, FP EM

June 28, 2010

Hernando County Sheriff's Office

Emergency Management

- **Current Situation**

- State EOC is at Level 1, Full Activation
- Top Hat & Q4000 in place : 6/26 collection 22,758 barrels. Some precautionary evacuations for Tropical Storm Alex.
- Progress continues at relief well drilling sites:
 - Development Driller I: 16,400 feet
 - Development Driller II: 12,000 feet
- BP Claims: Individual & Business Claims in Hernando County:
 - 127, Total Paid: \$42,788
- Government Claims process: orientation meeting scheduling underway.

Hernando County Sheriff's Office

Emergency Management

- **Statistics as of June 27, 2010**
 - 3,080 response vessels actively engaged
 - 38,000 personnel responding
 - 2.7 million feet of boom deployed (regular & sorbent)
 - 882,000 feet of boom available
 - 28 million gallons of oil/water mixture recovered
 - 1,552,000 gallons of dispersant used
 - 111 Aircrafts available for use

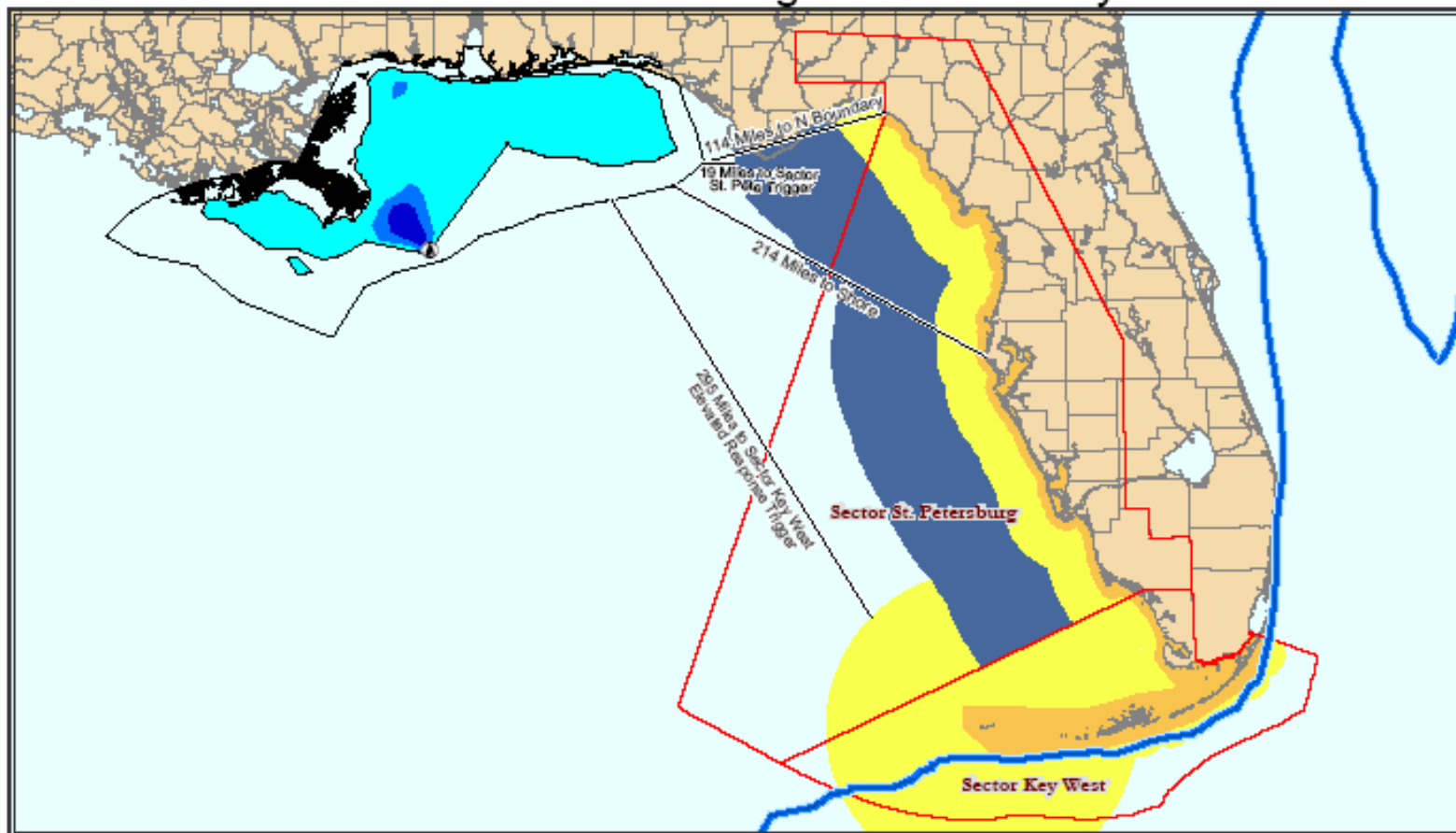
Hernando County Sheriff's Office

Emergency Management

• **Local Situation**

- Hernando County's EOC is at Level 3, Monitoring.
- Two over flights completed.
- Website current as of June 25.
- Daily/Weekly Conference calls continue.
- Expected impact: light sheen, tar balls and tar mats.
- Identified trigger point for the Tampa Bay region is 94 nautical miles measured from the coast to the outer edge of the area of uncertainty from any County within the St. Pete Sector command. (see Trajectory Map)

NOAA 72hr Trajectory for June 30, 2010 in Relation to USCG Sector St. Petersburg and Sector Key West

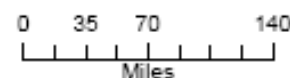


Legend

- Location of Oil Release
- Naval Oceanographic Office Loop Current for June 20
- NOAA 72hr Nearshore Trajectory for June 30 at 2200 EDT
- Forecast Heavy
- Forecast Medium
- Forecast Light
- Forecast Uncertainty
- Sector Key West**
- Elevated Response Phase Trigger
- High Response Phase Trigger
- Sector St. Pete**
- High Response Phase Trigger
- Elevated Response Phase Trigger
- Guarded Survey Phase Trigger



This scale bar shows the meaning of the distribution terms at the current time.
It depicts relative densities of oil distribution relative to classification (light to heavy).
Source : NOAA



Fish and Wildlife Research Institute
Center for Spatial Analysis

Hernando County Sheriff's Office

Emergency Management

- Coastal Oil Spill Response Plan Updates
Sampling & Monitoring Efforts (DEP)6/18
- Working with the Coast Guard on the strategy for protecting the Hernando County Coastline. Next meeting July 13th
- Continuing to develop a local strategy
- BP Claims Workshop
- Volunteers / Volunteer Training
- Presentations will be made as needed and upon request.

