

# Hernando County HURRICANE HANDBOOK

## A Preparedness Guide for Homeowners



**After a Hurricane is too late to protect your home and family. There are things you can do now to reduce the impact.**

*Prepared as a public service by*  
**Hernando County Sheriff's Office**  
**Emergency Management**  
[www.hernandosheriff.org/em](http://www.hernandosheriff.org/em)  
**352-754-4083**

2010 Edition

## 2010 Edition

### Contents

Terms and Definitions	i
Introduction	1
Information You Need	1
The Hazards of Hurricanes	3
Protect Your Home From High Winds	4
Protect Your Home From Flooding	8
What to Do Before June 1 <sup>st</sup>	10
Family Hurricane Plan	11
Options to Consider If You Need to Evacuate	11
No Transportation – No One to Help You?	11
Options to Consider If You Stay Home	12
Hurricane Preparedness for Your Pet	12
Mobile Home Owners	14
The Survival Kit	15
The Safe Room	15
Hurricane Evacuation Zones Map	Center
When A Hurricane Watch Is Issued	16
When An Evacuation Order Is Issued	17
When a Hurricane Warning Is Issued	17
After The Storm –How to Cope	18
Making Water Safe to Drink	19
No Sewage Facilities or Trash Pick Up	20
No Electricity	21
Insurance & Claims	21
Consumer Protection Tips	22
People with Special Needs	22
Assistance from Various Disaster Relief Agencies	23
Public Shelters – The Last Resort!	23
My Survival Kit	24
My Family Hurricane Plan	25
Guidelines for Hurricane Evacuation and Re-Entry	28
Helpful Internet Locations	30
Important Telephone Numbers	31
Hernando County Shelter Locations	32

## TERMS AND DEFINITIONS

**COASTAL FLOOD WARNING:** A warning that significant wind-forced flooding is imminent along coastal areas.

**COASTAL FLOOD WATCH:** An alert that wind-forced flooding is expected along coastal areas.

**EMERGENCY OPERATIONS CENTER (EOC):** The County or municipal facility that provides coordination and control of all emergency response and recovery activities.

**EVACUATION ORDER:** The most important instruction you will receive from local government officials, relayed over local radio and television stations. Once issued, an evacuation order is mandatory under law in the State of Florida.

**FEDERAL EMERGENCY MANAGEMENT AGENCY (FEMA):** The agency that assists local governments and citizens in recovering from a disaster, only upon the direction of the President of the United States.

**FLOOD WARNING:** Heavy rains are expected to cause flooding (minor, moderate or major).

**HURRICANE WARNING:** Hurricane conditions are expected in the specified area of the warning, usually within 24 hours. Complete all storm preparations as soon as possible.

**HURRICANE WATCH:** Hurricane conditions are possible in the specified area of the watch, usually within 36 hours. During a hurricane watch, prepare to take immediate action to protect your family and property in case a hurricane warning is issued.

**NATIONAL OCEANIC ATMOSPHERIC ADMINISTRATION (NOAA):** NOAA provides continuous broadcast of weather conditions in the Tampa Bay Area on a frequency of 162.550 MHZ.

**PUBLIC INFORMATION CENTER (PIC):** The PIC is the Emergency Operations Center's information line for Hernando County citizens. The PIC is only staffed during emergencies (352) 754-4083.

**RECORDED INFORMATION LINE:** A recorded message with the latest information regarding protective actions, evacuation information, shelters, recovery information, etc.

**TROPICAL STORM WARNING:** Tropical storm conditions, with winds ranging from 39-73 mph, are expected in specific coastal areas within 24 hours.

**TROPICAL STORM WATCH:** Tropical storm conditions pose a threat to coastal areas, generally within 36 hours.

## **INTRODUCTION**

Please read this guide thoroughly and apply the recommended actions. This guide is designed to help you minimize the damage to your home and to help you protect your family against the dangers of a hurricane.

By planning ahead you also reduce the discomforts of recovery and the time required to return your life to normal.

Please discuss this guide with your family - you should develop your family hurricane plan together. Write your plan on the pages provided and keep your handbook readily available during the hurricane season: June 1 through November 30.

## **INFORMATION YOU NEED**

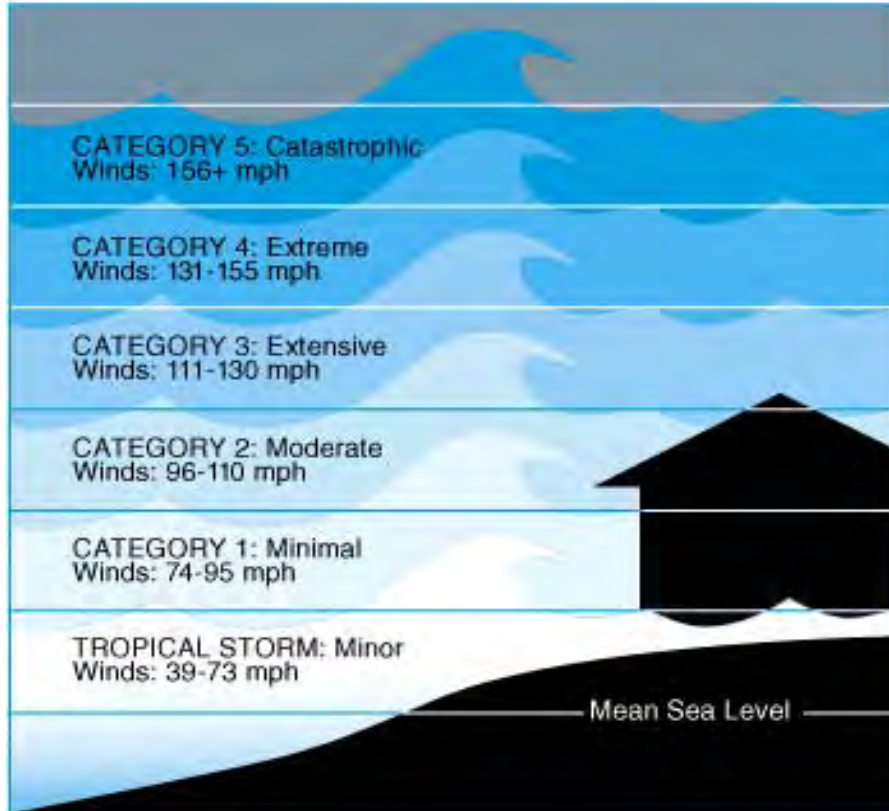
### **Do you know your Hurricane risk?**

Call the Hernando County Sheriff's Office Emergency Management (352) 754-4083 and ask about your vulnerability to hurricanes for the area in which you live. Ask for information about protecting your family and home.

We encourage you to stop by our office or visit our web page at: [www.hernadosheriff.org/em](http://www.hernadosheriff.org/em) to view the evacuation map for your community and determine the projected flood elevation for your neighborhood. This information will also help you to estimate how much water is likely to impact your home.

The following chart lists each storm category and its impact on a home at 5 feet above sea level. Most of the homes on our coast are 5 to 7 feet above sea level.

## STORM CATEGORIES & DAMAGE POTENTIAL



\* **Mean Sea Level** - (MSL) is the average sea level.

## THE HAZARDS OF HURRICANES

There are 5 strengths of hurricanes. They are categorized based upon their sustained winds, with Category 1 being the weakest and Category 5 being the most powerful. Hurricanes and tropical storms present four distinct hazards to us.

**Storm Surge:** The most dangerous hazard, storm surge, is a large dome of water that is pushed up on the land as the hurricane comes ashore. The shallowness of the Gulf of Mexico and strong winds will intensify the effects of storm surge on Hernando County. We could experience a 32-foot storm surge with a Category 5 hurricane.

**Winds:** The winds that generate storm surge also cause damage. Most vulnerable to these winds are trees, power lines, signs, manufactured, modular, or mobile homes, recreational vehicles and homes or businesses with unprotected windows.

**Tornados:** As they move on shore, hurricanes can spawn numerous tornados. These tornados can occur without warning and add to the destructive potential of the hurricane.

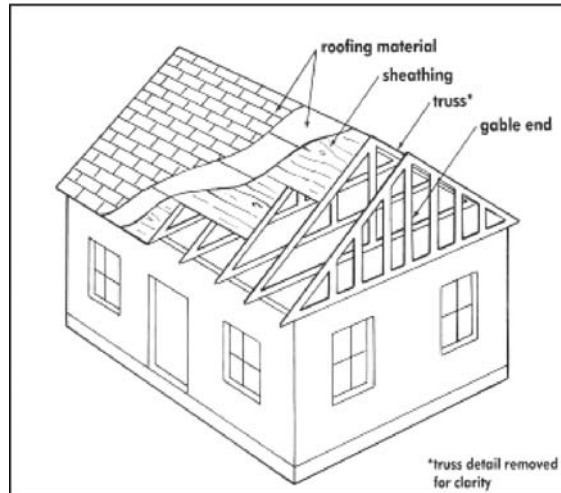
**Rain:** Hurricanes and tropical storms often bring very heavy rains for extended periods. From 6 to 8 inches of rain can fall in 24 hours or less producing flooding in many areas.

## PROTECT YOUR HOME FROM HIGH WINDS

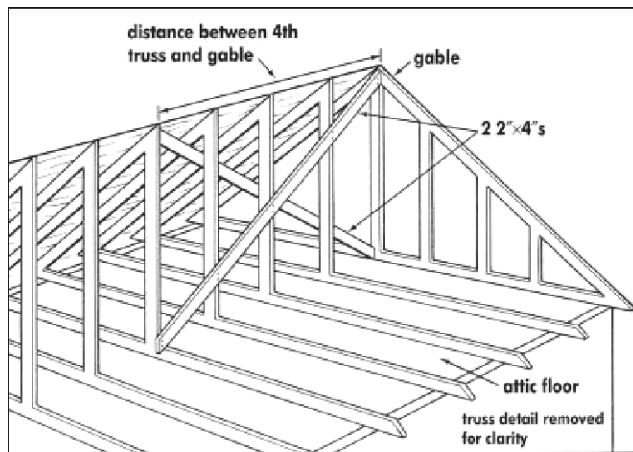
### Is the roof sheathing properly installed?

During a hurricane, wind forces are carried from the roof down to the exterior walls, and finally to the foundation. Homes can be damaged when wind forces are not properly transferred to the ground.

Roof sheathing (the boards or plywood nailed to the roof rafters or trusses) can fail during a hurricane if not properly installed. Examine the sheathing from the attic. If many of the nails have missed the rafters, you may need to re-nail the sheathing. If you're putting on a new roof, make sure the sheathing complies with current building codes.



### Are end gables securely fastened to the rest of the roof?



Example of gable bracing

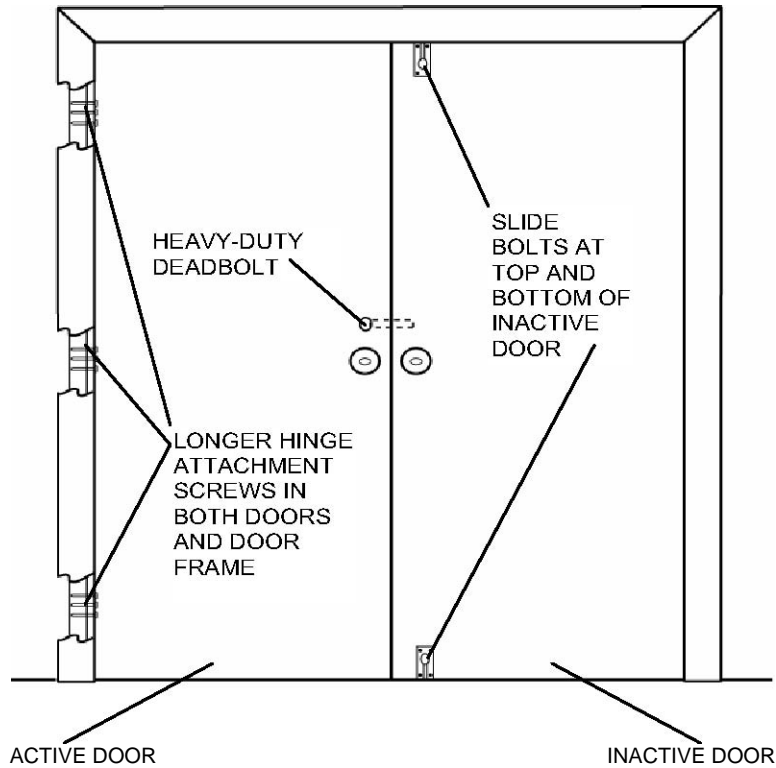
In a hurricane, the side walls of the roof (end gables) take a real beating and can collapse. Gable bracing often consists of 2x4s placed in an "X" pattern at both ends of the attic: from the top center of the end gable to the bottom of the brace of the fourth truss, and from the bottom center of the end gable to the peak of the roof. If your

end gables do not appear to be braced, use a licensed contractor to install additional bracing.

## Are double entry doors secured at the top and bottom?

The exterior walls, doors and windows are the protective shell of your home. If the shell is broken during a hurricane, high winds can enter the home and put pressure on the roof and walls, causing serious damage.

### TYPICAL DOUBLE ENTRY DOOR

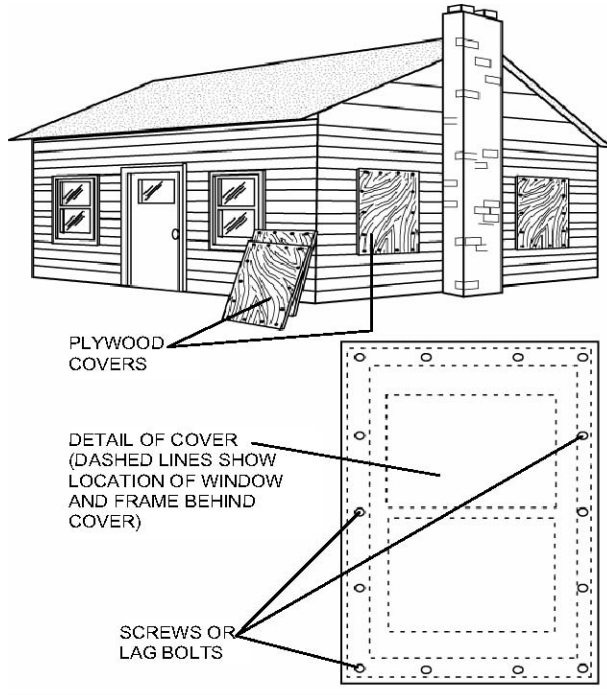
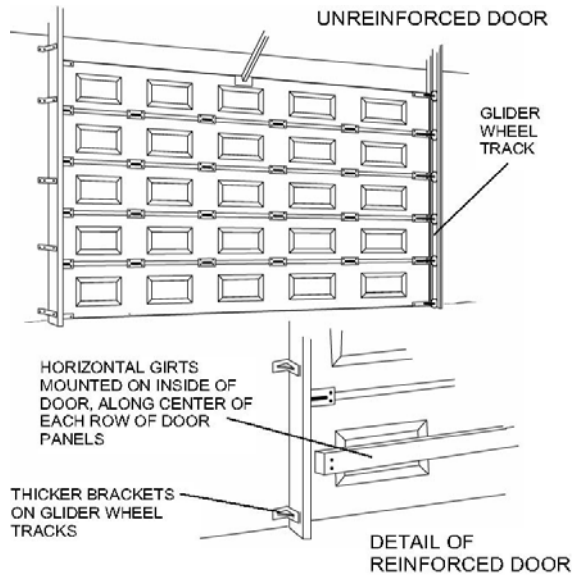


For each double door in your home, at least one of the doors should be secured at both the top of the door frame and the floor with sturdy sliding bolts. Most bolts that come with double doors, however, are not strong enough to withstand high winds. Your local hardware can help you select the proper bolts. Some door manufacturers provide reinforcing bolt kits made specifically for their doors.

## Has the garage door been properly secured?

If the garage door fails, winds can enter your home and blow out doors, windows, walls and the roof.

Consider purchasing and installing a wind-code door for your area. Licensed contractors or local home improvement stores can assist you in strengthening your garage door.



## Are your windows protected by storm shutters?

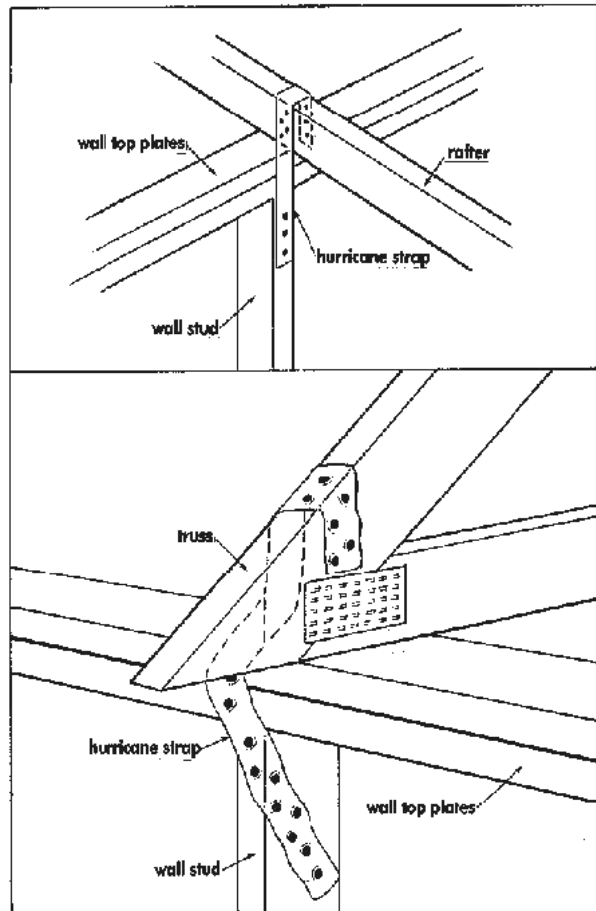
Installing storm shutters is one of the best ways to protect your home. Purchase or make storm shutters with 5/8-inch thick exterior grade plywood for all exposed windows, glass surfaces, French doors, sliding glass doors and skylights. The screws or lag bolts should be placed along the top, bottom, and sides of each cover, and they should be long enough to penetrate the wall studs

around the window, not just the siding or wall covering. Screws or lag bolts should be spaced a minimum of 12” apart.

There are also many types of manufactured shutters made out of wood, steel or aluminum.

**Is the roof fastened to the walls with hurricane straps?**

Hurricane straps (made out of galvanized metal) help keep the roof fastened to the walls in high winds.

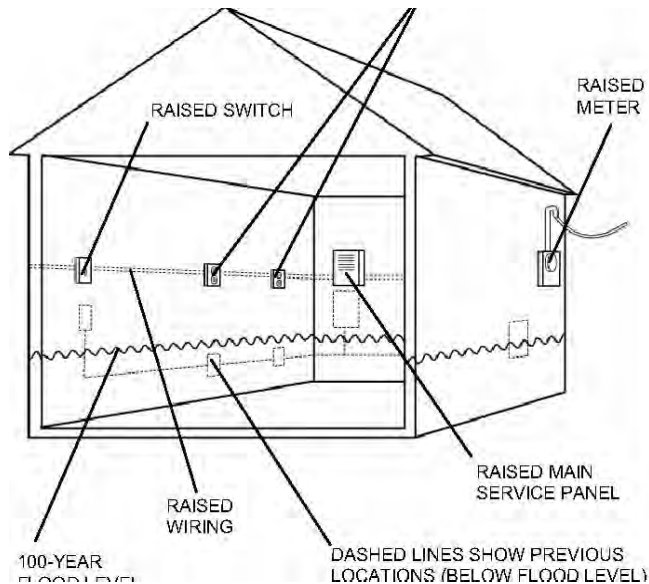


We recommend that you contact a general contractor for installation of these straps.

## PROTECT YOUR HOME FROM FLOODING

**Do you know the projected flood elevation for your area?** Contact your local building department, or emergency management office to view a flood map and the projected flood elevation for your neighborhood, if applicable. This information will help you determine how much water is likely to impact your home. To learn more about flood maps visit the FEMA Flood Hazard Mapping webpage at: [www.fema.gov/hazard/map/firm.shtm](http://www.fema.gov/hazard/map/firm.shtm)

Is the main electric panel board located above potential flood waters?



The main electric panel board (electric fuses or circuit breakers) should be above the projected flood elevation for your home. The panel board height is regulated by the building electrical code.

All electrical work should be performed by a licensed electrician.

**Are electric outlets and switches located above potential flood waters?** Consider elevating all electric outlets, switches, light sockets, baseboard heaters and wiring above the projected flood elevation for your home. You may also want to elevate electric service lines (at the point they enter your home) above the flood elevation. In areas that could get wet, connect all receptacles to a ground fault interrupter (GFI) circuit to avoid the risk of shock or electrocution. All electrical work should be performed by a licensed electrician.

**Are the washer and dryer above potential flood waters?** For protection against shallow flood waters, the washer and dryer can sometimes be elevated on concrete blocks, bricks or pressure-treated lumber above the projected flood elevation. Other options include moving the washer and dryer to a higher floor, or building a floodwall around the appliances.

**Are the air conditioner and water heater above potential flood waters?** The water heater can be placed on concrete blocks or bricks above the projected flood elevation, and moved to inside a floodwall or moved to a higher floor. Some AC vents can be located above the projected flood elevation. Outside air conditioning compressors, heat pumps or package units (single units that include a furnace and air conditioner) can be placed on a base of masonry, concrete or pressure-treated lumber. **All work must conform to state and local building codes.**

**Does the floor drain have a float plug?** Install a floating floor drain plug at the current drain location. If the floor drain pipe backs up, the float will rise and plug the drain. Some homes may have a back flow valve installed. For more home and preparedness information, visit our partners at the Federal Alliance for Safe Homes (FLASH) by going to [www.flash.org](http://www.flash.org) or calling them at 1-877-221-SAFE.

**Do you have enough flood insurance?** Even if you have taken steps to protect your home from flooding, you still need flood insurance if you live in a flood plain. Homeowners' policies **DO NOT** cover flood damage, so you will need to purchase a separate policy under the National Flood Insurance Program (NFIP). It takes 30 days for a flood policy to take effect. This is why you need to purchase flood insurance before flooding occurs. We strongly recommend that you consult with your insurance agent regarding flood damage coverage.

If your insurance agent is unable to write a flood policy, contact the NFIP at 1-800-638-6620 for information or visit [www.floodsmart.gov](http://www.floodsmart.gov).

## **WHAT TO DO BEFORE JUNE 1ST**

Don't wait until a tropical storm or hurricane is near! Once the hurricane watch is issued, time and supplies run dangerously short. Use this guide to complete your **family hurricane plan**.

### **DO YOU LIVE IN AN EVACUATION ZONE?**

*(See map in centerfold)*

### **DO YOU NEED A RE-ENTRY TAG?**

Visit us on the web at [www.hernandosheriff.org/em](http://www.hernandosheriff.org/em) or call us:

**Hernando County Sheriff's Office Emergency Management for the latest Re-entry tag information at (352) 754-4083.**

## FAMILY HURRICANE PLAN

Do I live in a mobile home? Yes No

**If yes, you are required to evacuate for all hurricanes.**

What is my evacuation zone?

If you do not know your evacuation zone, visit <http://www.hernandosheriff.org/em/> or call Emergency Management at (352) 754-4083. Our staff will be available to assist you. Emergency Management's regular office hours are from 8:00 am to 5:00 pm, Monday through Friday. We strongly encourage you to learn your evacuation level before a hurricane threatens.

### OPTIONS TO CONSIDER IF YOU NEED TO EVACUATE

- Should I go to a **Host Home**?
- Will I travel out of town? Where will I go? Have I made arrangements?
- Do I have a pre-planned destination?
- Do my family members know where I am and how to get in touch with me?
- Does my employer provide a special shelter for me and my family?
- What will I do with my pet(s)?
- How will I secure my boat?

Please enter your decisions in  
**My Family Hurricane Plan Checklist** on page 25.

### NO TRANSPORTATION - NO ONE TO HELP YOU?

Contact Hernando County Sheriff's Office  
Emergency Management: (352) 754-4083  
**NOW** to pre-register for evacuation assistance.

## **OPTIONS TO CONSIDER IF YOU STAY HOME**

- Prepare a complete home inventory of everything you own.
- Make sure trees are trimmed and loose items picked up and stored indoors.
- Protect windows by installing shutters or by covering with plywood 5/8" or thicker.
- Copy all important documents, medical and legal records, receipts of valuable items, and place originals in a safe, dry place.
- Determine a safe room (See Page 15)
- Can I be a Host Home?
- What will I do with my pet(s)?
- How will I secure my boat?
- If you run a generator, make sure it is outside. Running a generator indoors can create a carbon monoxide danger to your family.
- Please enter your decisions in My Family Hurricane Plan on Page 25.

## **WINDOW PROTECTION OPTIONS**

- Roll-down Shutters
- Shutter Panels
- 5/8" Plywood
- Hurricane Screens

## **HURRICANE PREPAREDNESS FOR YOUR PET**

- Keep your pet with you at a secure, storm-prepared location (Public shelters do not accept pets unless they are certified service animals).
- Take your pet with you to a friend or family member's house or to a hotel in a safe zone. This should be prearranged to avoid surprise and confusion.
- Leave your pet with a friend in a safe zone or board it at a veterinary clinic or kennel. All pet boarding facilities require up-to-date vaccinations and proper identification.
- Update your pet's vaccinations.

- Purchase tags and have your pet implanted with a microchip (tags and microchips used together are the most effective way of identifying pets).
- Carry a current picture of you with your pet and its medical records with you at all times.

The following is a list of supplies to have prepared for your pet:

- Portable carrier (large enough for the pet to stand up and turn around)
- Extra leash and collar
- Extra identification tag
- Pet food – at least a two-week supply of dry food in watertight container or canned food (manual can opener needed)
- Water – at least a two-week supply of clean water – large dogs need one gallon per day
- Up-to-date health records
- Medications – flea and tick preventative and two-month supply of heartworm preventative medication
- Litter/newspapers
- Toys and treats
- Towels
- First aid supplies
- Recent photo of you with your pet

DON'T leave your pets alone or turn them out to survive on their own.

In the event of a hurricane, stray animals will be taken to:

Hernando County Animal Services  
 19450 Oliver Street, Brooksville  
 (352) 796-5062

They may be reclaimed at Animal Services with appropriate identification.

Horses and livestock have a better chance for survival when turned out in clean pastures with native vegetation.

## MOBILE HOME OWNERS

**Remember that if you live in a mobile home you must evacuate for any hurricane threat.** This is because older mobile homes were built to different building code standards.



When Hurricane Andrew hit South Florida in 1992, it destroyed 11,000 mobile homes with winds of up to 145 mph. Two years later, in 1994, HUD enacted tougher building standards, requiring new manufactured homes to be built to withstand winds of 100 to 130 mph. Previously, the standard had been 70 to 90 mph.

Newer mobile homes are stronger; however, most of the state's stock of mobile homes predates major construction improvements mandated in 1994 in the wake of Hurricane Andrew. Recent analysis of Census data of occupied mobile homes shows that **only 16% were built after 1994.**

## THE SURVIVAL KIT

The contents of your survival kit should be personalized for you. Our suggestions are just a starting point. Think about your own needs, whether you stay or evacuate, and include additional items in your checklist as necessary. To begin building your personal survival kit, see our suggestions on page 24.

## THE SAFE ROOM

If you live in an area that is **not required to evacuate** and cannot protect all your windows and doors, for whatever reason, you can identify and provide protection for a portion of your home **-a safe room!**

### **How to select your safe room:**

- A room in the center of your home.
- A room with small or no windows.
- If you live in a two-story house away from the water, go to an interior first-floor room, such as a bathroom, a closet or under the stairs.
- If you live in a multiple-story building away from the water, go to the first or second floors and take refuge in halls or other interior rooms away from windows. Interior stairwells and the areas around elevator shafts generally are the strongest parts of a building.

### **Protecting and supplying the safe room:**

- If your selected safe room has windows, you must have some form of window protection.
- Move your water and food supply to your safe room.
- Move your battery-operated radio and flashlights to your safe room.
- Bring important papers in water resistant packaging.

### **When to go to your safe room:**

- When outside conditions worsen.
- When you hear a hurricane warning issued.
- Do not leave the safe room until the “all clear” is issued on the radio. Don’t be fooled by the calm eye of the storm.

## **WHEN A HURRICANE WATCH IS ISSUED**

*A hurricane may affect our area within 36 hours. Now is the time to:*

- Monitor Hernando County Government Broadcast (HCGB Channel 622) or your favorite local TV or radio station for weather updates.
- Check your hurricane supplies/survival kit.
- Contact family members to coordinate efforts.
- Turn refrigerator/freezer to coldest settings.
- Begin installing shutters or pre-cut plywood.
- Pool owners: Don't drain your pool completely; drop the level by 1 or 2 feet. Secure outdoor furniture and pool equipment. Turn off electricity to pool pump. Add extra chlorine to compensate for heavy rains.
- Fill your fuel tanks early: Automobile, propane, etc.
- Place valuables into waterproof containers or plastic bags.
- Get extra cash.

### **WATER:**

*Your water service could be disrupted after a hurricane strikes.*

- Freeze water in plastic jugs. Fill up emergency water containers NOW.
- Sterilize bathtub, jugs, bottles, cooking utensils and other containers. To do this, scrub thoroughly, sponge and swab with regular, unscented liquid chlorine bleach, then rinse. Let the tub and other containers dry, and then fill with water.

### **SEWER:**

*Your sewer services could be disrupted in the event of a hurricane.*

*Follow these guidelines:*

- Keep 5-gallon buckets, with tight-fitting lids, for use as emergency toilets. Line each bucket with a heavy-duty plastic trash bag.

## WHEN AN EVACUATION ORDER IS ISSUED

*You have about 12 hours to accomplish the following:*

- Determine if the evacuation order applies to your area.
- Clear your yard of loose objects such as hoses, BBQ grills, lawn chairs and flower pots by securing them inside.
- Protect valuables and electrical equipment.
- Move valuables away from windows.
- Cover valuables with plastic bags.
- Place them in cabinets, large appliances or closets.

*If the order applies to you:*

- Call friends/relatives and let them know your evacuation destination.
- Secure all windows and doors tightly with shutters or plywood.
- Load your survival kit.
- Turn off electric, water and gas.
- Evacuate quickly, but safely.

## WHEN A HURRICANE WARNING IS ISSUED

*The leading edge of the storm is just hours away. Complete all preparations as soon as possible.*

- Move your supplies and survival kit to your safe room.
- Close all interior doors. Secure and brace external doors.
- Stay inside.
- **Do not leave the safe room until the all clear is issued on the radio.** Don't be fooled by the calm eye of the storm.

## AFTER THE STORM - HOW TO COPE

*In the next few pages you will find helpful hints for coping without water, sewer and electricity; what you should know about trash and debris collection; filing insurance claims; avoiding unlicensed contractors; and the assistance available from disaster relief agencies.*

- Leave your safe room slowly and carefully. Inspect damage inside your house only.
- Begin to clean up the most dangerous conditions such as broken glass.
- Call 9-1-1 to report life-threatening emergencies only - not damages or power outages.
- Wait for the “all clear” from local authorities before you go outside, drive, or return home. Emergency vehicles have priority use of roadways.
- Once the “all clear” is given, only proceed on the roadways if necessary; do not go sight-seeing as emergency vehicles need the roadways open.
- When venturing outside, avoid downed or dangling utility wires. Be especially careful when cutting or clearing fallen trees or walking through water puddles. They may have power lines tangled or laying in them.

**NO WATER . . .** If you have exhausted your water supplies and have a well, you can follow some water purification procedures until water service is restored.



Contaminated water can contain micro-organisms that cause disease. You should purify any water of which you're uncertain.

There are many ways to purify water; none are perfect. Often the best solution is a combination of methods.

## MAKING WATER SAFE TO DRINK

Before purifying, let any suspended particles settle to the bottom, then strain them through layers of clean cloth.

The following are three purification methods, all of which kill microbes:

- **BOILING** is the safest way to purify water. Bring water to a rolling boil for 1 minute, keeping in mind that some water will evaporate. Of course, let cool before drinking. Boiled water will taste better if you put oxygen back into it. Do this by pouring water back and forth between 2 clean containers. This also will improve the taste of stored water.
- **CHLORINATION** uses pure, unscented, liquid chlorine bleach to kill micro-organisms in water. Add 2 drops of bleach per quart of water (4 drops if the water is cloudy), stir and let stand for 30 minutes. If the water does not smell or taste of chlorine at that point add another 2 drops and let stand for 15 minutes.
- **PURIFICATION TABLETS** release chlorine and iodine into the water. They are inexpensive and are available at most sporting goods stores and some drug stores. Follow the package directions. Usually 1 tablet is enough for 1 quart of water. Double the dose for cloudy water.

### **Your hot water heater is another source of usable water.**

The hot water heater should be shut off, the inlet valve closed and drained of sediment (until water runs clear) and then refilled (opening inlet valve again). If you use this source of water and your electricity is off, turn off the circuit breaker so the heating elements don't burn out when power is restored.

## NO SEWAGE FACILITIES OR TRASH PICK UP . . .



### Emergency Restroom Facilities

- A camper or motor home with a restroom, that has a holding tank, can be used until the tank is full.
- A chemical port-a-john can be created:
  - Use 5-gallon buckets lined with heavy-duty plastic garbage bags. Add about 1/4 cup of lime or regular, unscented, liquid chlorine bleach to the bucket as a disinfectant and deodorizer. Keep lids on firmly.
  - Keep buckets in a cool, dark place.
  - DO NOT DISPOSE OF HUMAN WASTE THROUGH YOUR REGULAR TRASH PICKUP! Dispose of the waste by flushing it down your toilet as soon as sewer services are restored.
  - Clean and disinfect the buckets immediately.
- Your toilet can be used by flushing until the bowl has no water. Then, line with heavy-duty trash bags and disinfect with chlorine bleach after each use. When full, tie shut and remove to an outside location.
- If significant sewer outages have occurred, instructions for disposal of human wastes will be announced. Otherwise, when the system is operating again, dump the waste you've collected into your toilet and flush.

## **NO ELECTRICITY . . .**

**Do not plug portable generators into your home's electrical outlet!**  
This could cause serious injury or even death.

Place your generator outdoors or in a well-ventilated area. Plug necessary appliances directly into the generator.

When using a generator, conserve fuel by limiting appliance usage to the bare essentials.

## **INSURANCE & CLAIMS**

- Report property damage to your insurance agent immediately. Your agent should provide you with claim forms and arrange for an insurance adjuster to visit your property and assess the damage.
- Make emergency repairs and document them. Keep all receipts and take photographs of the damages, before and after emergency repairs, to submit with your claim.
- Take precautions if the damages require you to leave your home.
  - Secure your property.
  - Remove valuable items.
  - Lock windows and doors.
  - Contact your insurance agent and leave a phone number where you can be reached.



## **CONSUMER PROTECTION TIPS**

*Home repairs after a disaster may be the most stressful time for a consumer.*

The following tips will assist you in identifying unlicensed contractors and con artists:

- Be extremely cautious of anyone coming to your home uninvited and offering to do home repairs.
- Be alert to individuals canvassing your neighborhood in an unmarked van or truck.
- Insist on obtaining a written estimate or contract. In fact, you should obtain estimates from several companies.
- Be sure the contract or business card has an address, telephone number and license numbers.
- Ask for references and check them out.
- Don't be pressured into making a quick decision.
- Insist on start and completion dates in the contract, and do not pay the final balance until the work is completed to your satisfaction.

To verify contractor licenses, contact the Hernando County Building Department at 352-754-4050.

Hernando County Sheriff's Office can answer questions about any unlawful activities. Call (352) 754-6830.

## **PEOPLE WITH SPECIAL NEEDS**

If you or a family member have a physical, mental or sensory disability and require assistance with evacuation during an emergency, then you should register in our Special Needs program. Please contact Hernando County Sheriff's Office Emergency Management (352-754-4083) to fill out a form or complete the form on line at our web page address: <http://www.hernadosheriff.org/em/event/before/SpecialNeeds.htm>

## **ASSISTANCE FROM VARIOUS DISASTER RELIEF AGENCIES**

The Federal Emergency Management Agency (FEMA) may establish Disaster Recovery Centers in the disaster area. These centers are kept in operation as long as required.

Individual assistance, depending on the severity of the emergency, may include:

- Temporary housing
- Unemployment assistance
- Individual and family grants
- Crisis counseling
- And more . . .

To apply for Individual Disaster Assistance, call the FEMA Tele-registration number toll free at 1-800-462-9029 or TDD # 1-800-462-7585. Hernando County must be declared a federal disaster area and approved for Individual Assistance by FEMA before Tele-registration can begin.

## **PUBLIC SHELTERS - THE LAST RESORT!**

If you live in a manufactured, mobile or modular home or in an evacuation zone, the best option is to make arrangements to stay with friends, relatives, or co-workers, or at your place of employment in a non-evacuation area.

The last option is public shelters. Space is very limited and conditions are basic. If you plan to evacuate to a public shelter, be prepared for very crowded conditions.

- Bring folding chairs, cots, pillows and blankets.
- Bring special dietary needs, prescription medications, baby diapers, formula, etc.
- Bring books, puzzles and other quiet games.
- Bring battery-powered radios or televisions and extra batteries.
- Bring portable coolers
- **DO NOT** bring pets, firearms, illegal drugs or alcohol.

## MY SURVIVAL KIT

- Containers for drinking water (1 gallon per person, per day. Minimum of 5 day supply)
- Seal water containers tightly, label and date them when filled, and store in a cool, dark place.
- Containers for sewage 5-gallon buckets, with covers (at least 2)
- Toilet Paper (stored in Ziploc or plastic sealed container)
- Heavy-duty trash bags
- Bleach (pure, unscented, liquid)
- Water purification tablets
- Non perishable (canned or packaged) food and beverages (minimum of a 3 day supply)
- Pet carrier(s), extra pet food and water and pet records/ registration
- Non-electric can opener
- Emergency/camping cooking equipment and fuel
- Fire extinguisher
- Portable cooler
- Small personal fan
- Sunscreen
- Laundry Soap
- Matches or lighters
- Rope
- Duct tape
- Tarp
- Baby food, diapers and formula
- Extra prescription medicine (2week supply)
- Battery-powered radio and extra batteries
- 2 flashlights and 2 extra packets of batteries
- List of important phone numbers
- Insurance policies/titles to real property
- Toiletries (Placed in Ziploc bags to keep clean and dry)
- Special dietary needs
- Insect repellent
- First-aid kit
- Cash
- \_\_\_\_\_
- \_\_\_\_\_
- \_\_\_\_\_
- \_\_\_\_\_
- \_\_\_\_\_
- \_\_\_\_\_
- \_\_\_\_\_
- \_\_\_\_\_

## MY FAMILY HURRICANE PLAN

This is where you apply what you have learned from the previous pages. Entering vital information on these pages will make it easier to follow when needed.

Our Evacuation Zone: \_\_\_\_\_

Where we will go if/when we need to evacuate? (*Name, address, phone#*):

\_\_\_\_\_  
\_\_\_\_\_

Have I made appropriate arrangements? ..... Yes..... No

Have I notified family and friends of our plans? ..... Yes..... No  
If Yes, list names, addresses, and phone #'s on page 33

Will I go to a Host Home? ..... Yes..... No  
If Yes, list name, address and phone # \_\_\_\_\_

\_\_\_\_\_

Does my employer provide a special shelter for me and my family?  
..... Yes..... No  
If Yes, list name, address and phone # \_\_\_\_\_

\_\_\_\_\_

Name/type of pet(s)? \_\_\_\_\_

\_\_\_\_\_

Photo of family with pet included? ..... Yes..... No  
What will I do with my pet(s)?

If I stay? \_\_\_\_\_

If I go? \_\_\_\_\_

Have a boat? ..... Yes..... No  
If yes, is it secure? ..... Yes..... No

Do I require a re-entry tag? ..... Yes..... No

If I stay, what preventive measures will I take to safeguard my home?

---

---

---

Window protection purchased? ..... Yes..... No

Shutters?  5/8" Plywood?

Will I be a Host Home? ..... Yes..... No

If yes, how many/who will I host? \_\_\_\_\_

---

---

---

Valuables and important papers copied and placed in a waterproof, safe place? ..... Yes..... No

Location: \_\_\_\_\_

Safe room identified? ..... Yes..... No

Location: \_\_\_\_\_

Have I purchased/planned for obtaining the elements of my hurricane survival kit? ..... Yes..... No

Notes:

---

---

---

---

---

---

---

---



## **GUIDELINES FOR EVACUATION AND RE-ENTRY**

**Evacuation** -A natural or technological event may jeopardize the health, safety, and welfare of the citizens and visitors in various areas of Hernando County. When it is anticipated that an event will threaten lives and property, an evacuation order may be issued. Hurricanes provide advance warning. Today's science allows us to determine the potential impact. With this information we are able to identify which segments of our population are most at risk and move them to safe areas. There are situations where an event has occurred which affects a segment of the population so severely that they cannot remain at home. An evacuation would then be ordered until the situation is stabilized.

**Controlled Area** - It is standard policy in the State of Florida that once an evacuation has been announced, no-one will be allowed into the evacuated areas until authorized by the Sheriff. This policy is meant to reduce the possibility of looting while the area is unoccupied, and to control a possible influx of unauthorized and/or unlicensed clean-up or repair contractors once the evacuated area is reopened.

**Re-Entry into a Controlled Area** - Law Enforcement or other security personnel will determine those vehicles that may be allowed into the controlled area.

*Re-Entry may be granted by displaying either:* A Florida State-Issued Photo Driver's License with a local address within the evacuated area OR an out-of-state Driver's License AND a Florida State-Issued Photo ID card with a local address within the evacuated area.

**If you have either of these, you DO NOT need a Re-Entry Tag.** If you DO NOT have these, you will need to show a valid Hernando County Re-Entry Tag AND a current Photo Driver's License (any state) with matching names.

Hernando County Re-Entry Tags are to be hung from the interior rearview mirror of a vehicle while it is in the controlled area to indicate to an observer that it is authorized to be there. Tags must be removed from display when the vehicle exits the controlled area so it does not impede the driver's view.

**Post-Disaster Distribution** - Re-Entry Tags will be issued to those people who demonstrate that they require access to a controlled area on a temporary short-term basis.

**Re-Entry Tag Issuance and Cost** - Each verifiable resident/property owner/employer/employee may request one Tag per property/residence/place of employment at no cost.

**Re-Entry Tag Distribution** – Refer to the **Hernando County Sheriff's Office Emergency Management** webpage for the latest information regarding the Re-Entry Program at [www.hernandosheriff.org/em](http://www.hernandosheriff.org/em)

## HELPFUL INTERNET LOCATIONS

Emergency Management \_\_\_\_\_ [www.hernadosheriff.org/em](http://www.hernadosheriff.org/em)  
Emergency Notification to E-Mail or Pager \_\_ [www.emergencyemail.org](http://www.emergencyemail.org)  
Emergency Training Courses \_\_\_\_\_ <http://training.fema.gov/>  
Federal Emergency Management Agency (FEMA) \_\_\_\_\_ [www.fema.gov](http://www.fema.gov)  
Florida Department of Emergency Management \_\_\_\_\_ [www.floridadisaster.org](http://www.floridadisaster.org)  
Florida Lightning Strike Tracker \_\_\_\_\_ [www.flamedia.com/lightning/light.htm](http://www.flamedia.com/lightning/light.htm)  
National Hurricane Center \_\_\_\_\_ [www.nhc.noaa.gov/index.shtml](http://www.nhc.noaa.gov/index.shtml)  
NOAA Forecast Office for Tampa Bay Region \_\_\_\_\_ [www.srh.noaa.gov/tbw](http://www.srh.noaa.gov/tbw)  
NOAA Interactive Weather Pages \_\_\_\_\_ <http://iwin.nws.noaa.gov>  
NOAA Southeast River Forecast Center \_\_\_\_\_ [www.srh.noaa.gov/serfc](http://www.srh.noaa.gov/serfc)  
Red Cross Disaster Services \_\_\_\_\_ [www.redcross.org/services/disaster](http://www.redcross.org/services/disaster)  
Satellite Images \_\_\_\_\_ <http://www.goes.noaa.gov/>  
Southwest Florida Water Management District <http://www.swfwmd.state.fl.us/>

### **To Volunteer for:**

Amateur Radio Emergency Communications

Community Crime Watch

Community Emergency Response Team

Email us at [eoc@hernadosheriff.org](mailto:eoc@hernadosheriff.org) or call (352) 754-4083

**IMPORTANT TELEPHONE NUMBERS  
FOR HERNANDO COUNTY**

**USE 9-1-1 FOR EMERGENCIES ONLY**

**PUBLIC INFORMATION CENTER (PIC-Emergency Management)**\_\_\_\_\_352-754-4083

**RECORDED INFORMATION LINE**\_\_\_\_\_352-754-4111

*To report or get information about:*

**DRINKING or WELL WATER ISSUES**

Hernando County Health Department \_\_\_\_\_352-540-6800

**ELECTRIC POWER LINES DOWN or POWER OUT**

Withlacoochee River Electric Co-Op, Inc.\_\_\_\_\_352-596-4000

Progress Energy\_\_\_\_\_352-563-4423

**GENERAL INFORMATION**

Hernando County Emergency Management\_\_\_\_\_352-754-4083

**MOSQUITO PROBLEMS**

Hernando County Mosquito Control\_\_\_\_\_352-754-4060

**ROAD CLOSURES**

Hernando County Sheriff's Office\_\_\_\_\_352-754-6830

**ROAD CONDITIONS & PROBLEMS**

Hernando County Public Works\_\_\_\_\_352-754-4060

**SCHEDULING of COURT CASES**

Hernando County Clerk of the Circuit Court\_\_\_\_\_352-754-4201

**SCHOOL CLOSING or OPENING**

Hernando County Public Schools\_\_\_\_\_352-797-7000

**SHELTER LOCATIONS**

American Red Cross\_\_\_\_\_352-799-3237

**STRAY ANIMALS or WILDLIFE**

Hernando County Animal Control\_\_\_\_\_352-796-5062

**TELEPHONE SERVICE PROBLEMS**

AT&T Residential Customers\_\_\_\_\_888-757-6500

**WATER or SEWER SERVICE PROBLEMS**

Hernando County Utilities Department\_\_\_\_\_352-754-4037

**Please remember that during a time of emergency, many people may be calling these telephone numbers. Your patience and cooperation will be appreciated by those trying to help you. Thank you.**

## **HERNANDO COUNTY SHELTER LOCATIONS**

**Challenger K-8 School\***  
**13400 Elgin Boulevard, Spring Hill**

**Explorer K-8 School**  
**10252 Northcliffe Boulevard, Spring Hill**

**Weeki Wachee High School**  
**12150 Vespa Way, Weeki Wachee**

**Deltona Elementary**  
**2055 Deltona Boulevard, Spring Hill**

**Nature Coast Technical School**  
**4057 California Street, Brooksville**

**Fox Chapel Middle School**  
**9414 Fox Chapel Lane, Spring Hill**

**Moton Elementary**  
**7175 Emerson Road, City of Brooksville**

**Chocachatti Elementary**  
**4135 California Street, Brooksville**

**Hernando High School**  
**700 Bell Avenue, City of Brooksville**

**F.W. Springstead High School**  
**3300 Mariner Boulevard, Spring Hill**

**West Hernando Middle School**  
**14325 Ken Austin Pkwy., Brooksville**

**D.S. Parrott Middle School\*\***  
**19220 Youth Drive, Brooksville**

**\* Special Needs Shelter**

**\*\* Pet Friendly Shelter**



Since the attacks against our country in 2001, all Americans have been asked to dedicate at least two years of their

lives in service to others. USA Freedom Corps is an initiative to inspire and enable all Americans to find ways to serve their community, their country or the world. Citizen Corps is the component of USA Freedom Corps that creates opportunities for individuals to volunteer to help their communities.

Hernando County Sheriff's Office Emergency Management offers disaster training in the form of the Community Emergency Response Teams (CERT).

CERT training gives you the ability to recognize, prepare for, respond to, and recover from a natural or man-made disaster situation.

The citizens of Hernando County are trained in areas that will help them take care of themselves, their families, and their neighbors before, during, and after a major emergency.



The Sheriff's Office recruits volunteers to help with parking citation enforcement, community relations, clerical fingerprinting, victims' advocacy, and the senior cell phone program. Neighborhood Crime Watch is vital to the Sheriff's Department. As a member of Crime Watch you are the eyes and ears of your community, and have the ability to know when something is out of place or there is someone in your neighborhood who you do not know. Citizens Academy introduces citizens to police work, from how to patrol your neighborhood to tactics used in high-risk incidents.

These are just a few of the programs that we have in Hernando County. Nature Coast Citizen Corps asks you to help your family and ensure your community is safer, stronger and better prepared to respond to any kind of disaster.

The Citizen Corps Mission is: *"To have everyone participate in making America safer."* Every American can participate through personal responsibility, training, and volunteer service.

**Hernando County Sheriff's Office**  
**Emergency Management**  
[eoc@hernandosheriff.org](mailto:eoc@hernandosheriff.org)  
**352-754-4083**