

## How to access the PSR portal:

- [www.hernando.sheriff.org](http://www.hernando.sheriff.org)
- Citizen Resources
- Other
- Project Safe Return

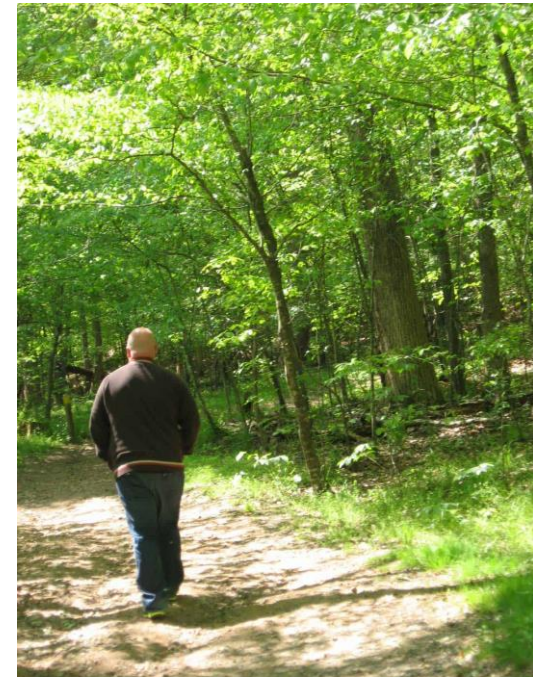
In order to maintain current information on each individual, we ask that caregivers log in to their account at least one time every six months, and make any modifications or replace older photos with new ones.

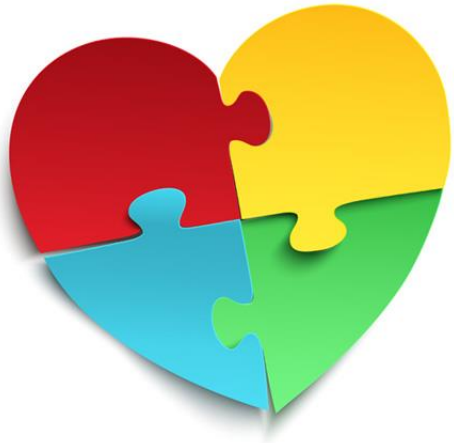
**Hernando County Sheriff's Office**  
18900 Cortez Boulevard  
Brooksville, FL 34601

[www.hernandosheriff.org](http://www.hernandosheriff.org)

# Project Safe Return

A program designed to facilitate the safe return of individuals suffering from cognitive and/or behavioral disorders, who have wandered away from home or become lost.





## What is Project Safe Return

**Project Safe Return (PSR)** is a program initiated by the Hernando County Sheriff's Office to assist law enforcement (first responders) in facilitating the safe return **home** of individuals with cognitive and/or behavioral disorders.

### Cognitive and Behavioral Disorders

#### Dementia

Dementia is a general term for loss of memory, language, problem-solving and other thinking abilities that are severe enough to interfere with daily life.

## Project Safe Return

#### Alzheimer's Disease

Alzheimer's Disease is the most common type of dementia. It is a progressive disease beginning with mild memory loss and possibly leading to the loss of the ability to carry on a conversation and respond to the environment.

#### Autism

Autism or Autism Spectrum Disorder (ASD), refers to a broad range of conditions characterized by challenges with social skills, repetitive behaviors, speech and nonverbal communication.

### How PSR Works

The responsible party (parent, caregiver, nurse, etc.) completes the on-line form, providing the HCSO with a physical description, photo, and other miscellaneous information on the Participant (at-risk individual). This information is stored in a database at the HCSO.

If the Participant wanders away from home, gets lost, or perhaps leaves home without being detected, law enforcement officials utilize the information and photos in the PSR database to get the individual back home.

Many times the HCSO responds to calls where an elderly individual or a child has been found wandering. Having gotten out of the residence undetected, the individual has not yet been reported missing. Children with autism may be non-verbal; the elderly person suffering from dementia or Alzheimer's may not remember where they live.

During these instances, law enforcement utilizes technology, along with the information and photos supplied in the PSR database, to identify the individual and return him or her to their home or to a safe environment.

